



SVETLANA GORBACHEVA

FALL 2017 ARTIST IN RESIDENCY Roberson Museum and Science Center

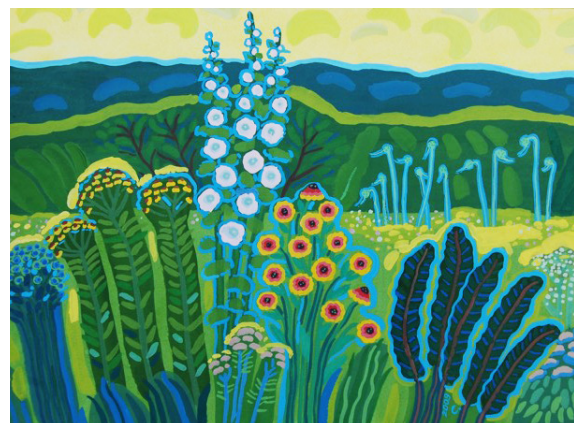
Known as "Sveta" to her friends, the Borovichi, Russia resident has been recognized for excellence in drawing, painting, sculpture, quilting, knitting, weaving and doll making. Holding an advanced degree in fine art from a prestigious Russian university, Svetlana has been sharing her expertise with students as an instructor at the Borovichi Children's Art School for more than 20 years.

School Program: **OUR WONDERFUL NATURAL WORLD**

Dates: Friday, October 27
November 1, 2, 3 and 7
Cost: \$150 (up to 25 students)
*Best for students in grades 3 - 7.
High school art classes also available.*

Sveta Gorbacheva will be returning to Roberson as a resident artist this fall from the Children's Art School in Borovichi, Russia. She will lead students through the process of design by having students create art pieces inspired by our newest exhibition *NatureTrek*. Mediums to choose from: gouache (a method of painting using opaque pigments ground in water and thickened with a glue like substance), gel pens and markers, or clay sculptures influenced by our Lee J. Loomis mounted specimen collection. Have your students enjoy this unique experience. Book early as availability is very limited!

To schedule your visit, please contact Christina Mack, Planetarium and Scheduling Coordinator at (607) 772-0660 ext 236 or by email at cmack@roberson.org.



30 Front St., Binghamton, NY 13905 (607)772-0660 www.roberson.org

The Svetlana Gorbacheva Artist-in-Residence Programs are generously funded by a grant from the Stewart W. and Willma C. Hoyt Foundation.

Funding for Roberson Museum and Science Center is provided in part by general operating support grants from the United Cultural Fund, a program of the Broome County Arts Council; The Conrad and Virginia Klee Foundation, and the New York State Council on the Arts with the support of Governor Andrew M. Cuomo and the New York State Legislature.